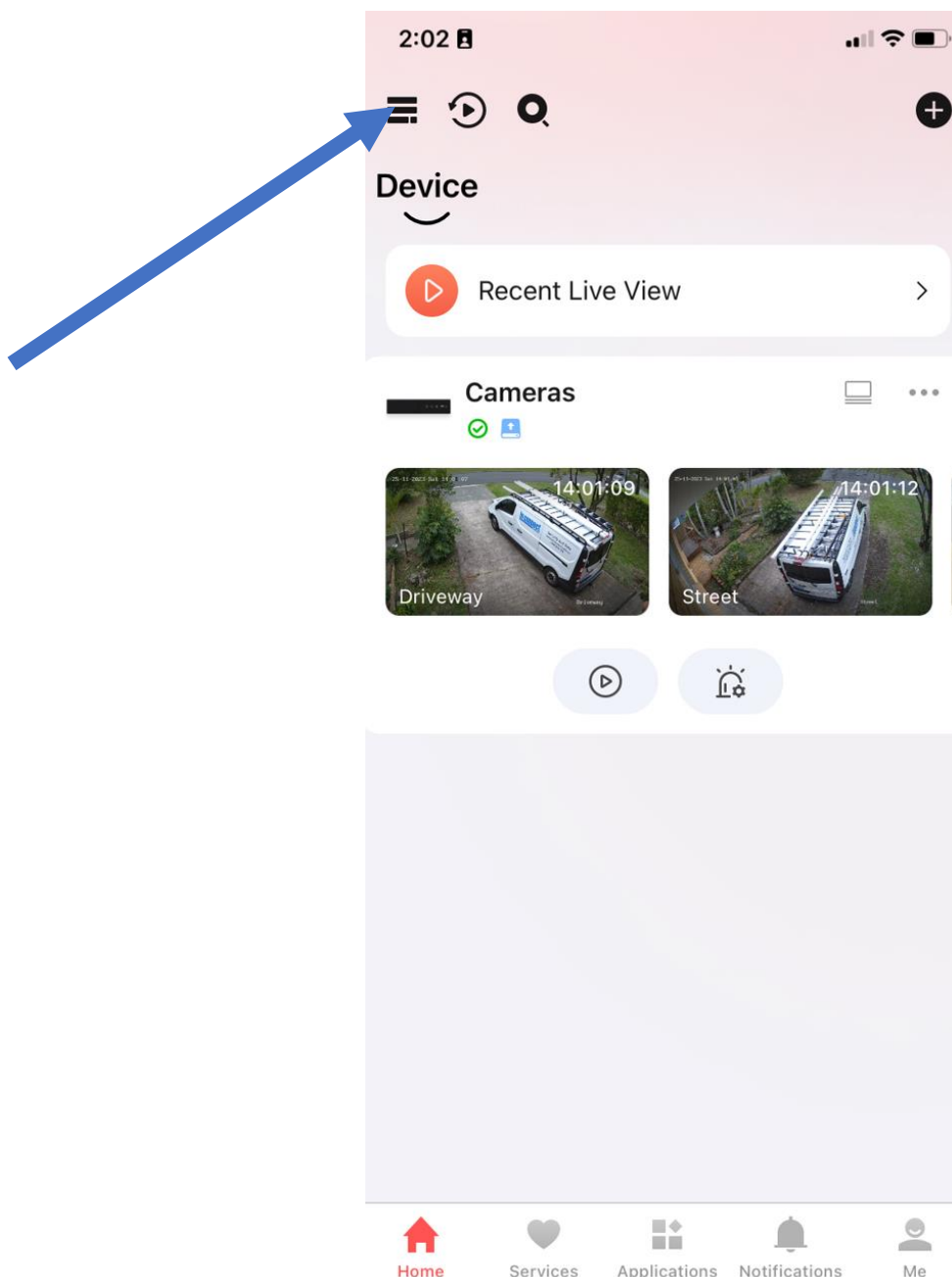


HIK-CONNECT – HOW TO USE LIVE-GUARD

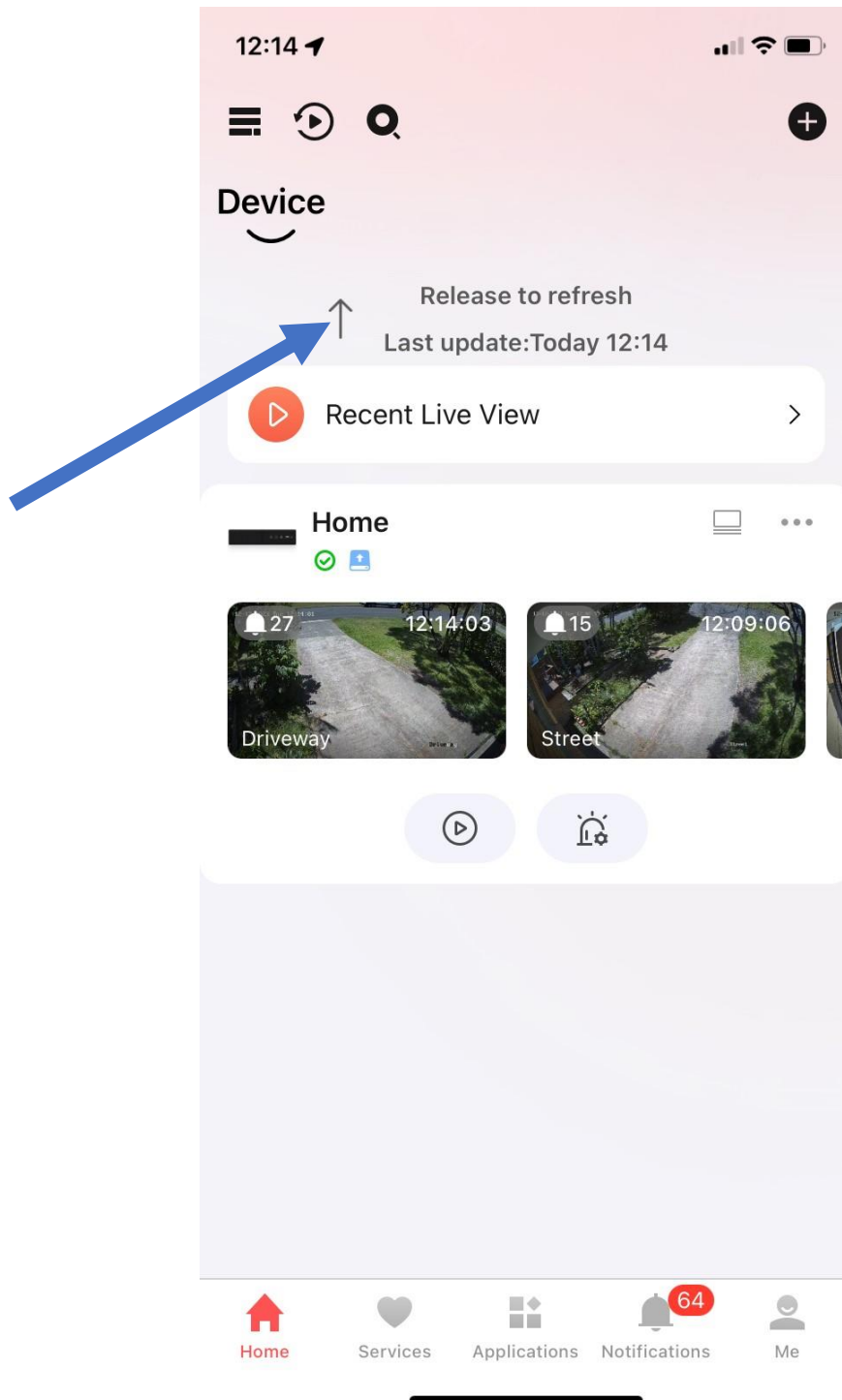
NOTE 1: TILE VIEW

This manual is presented in 'Tile View', if you are using the app in 'List View', you can change to 'Tile View' using this button.

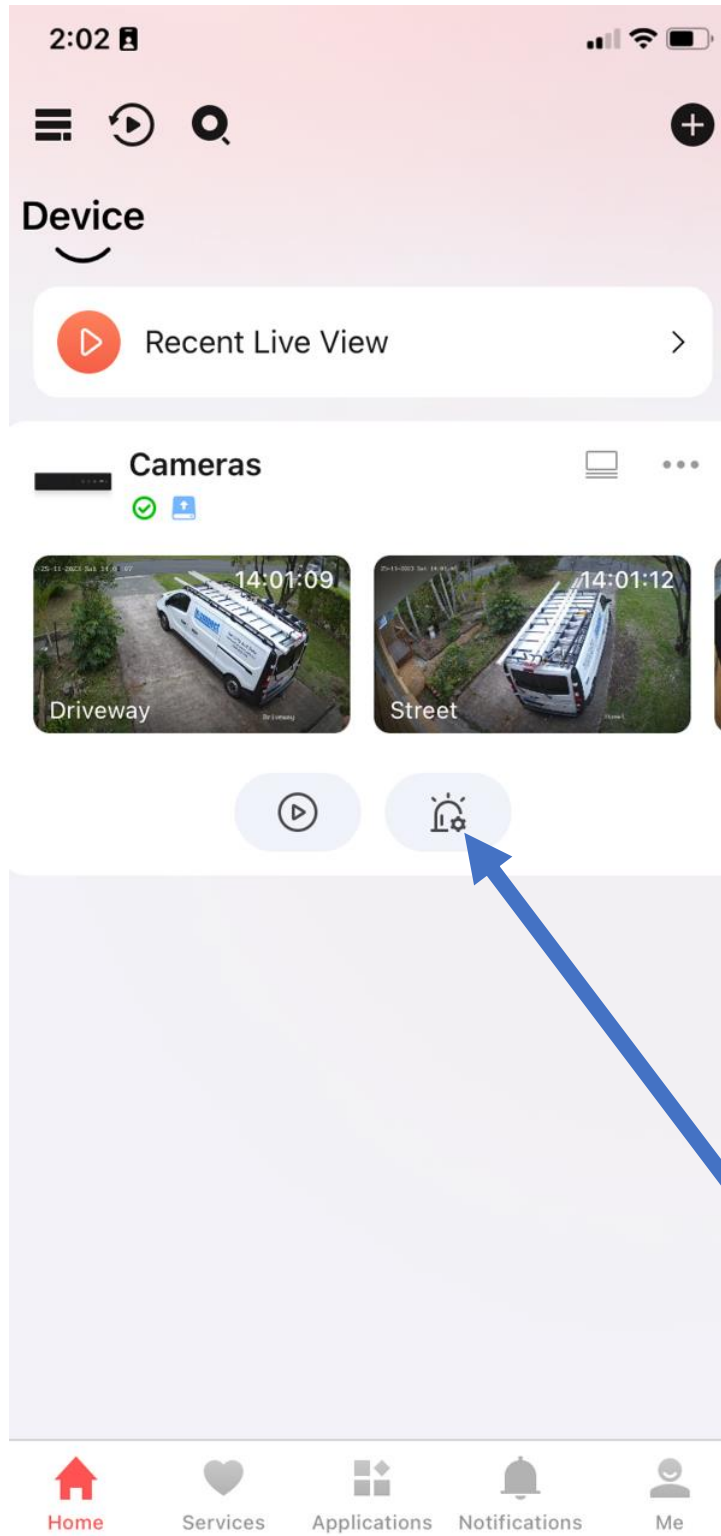


NOTE 2: REFRESH

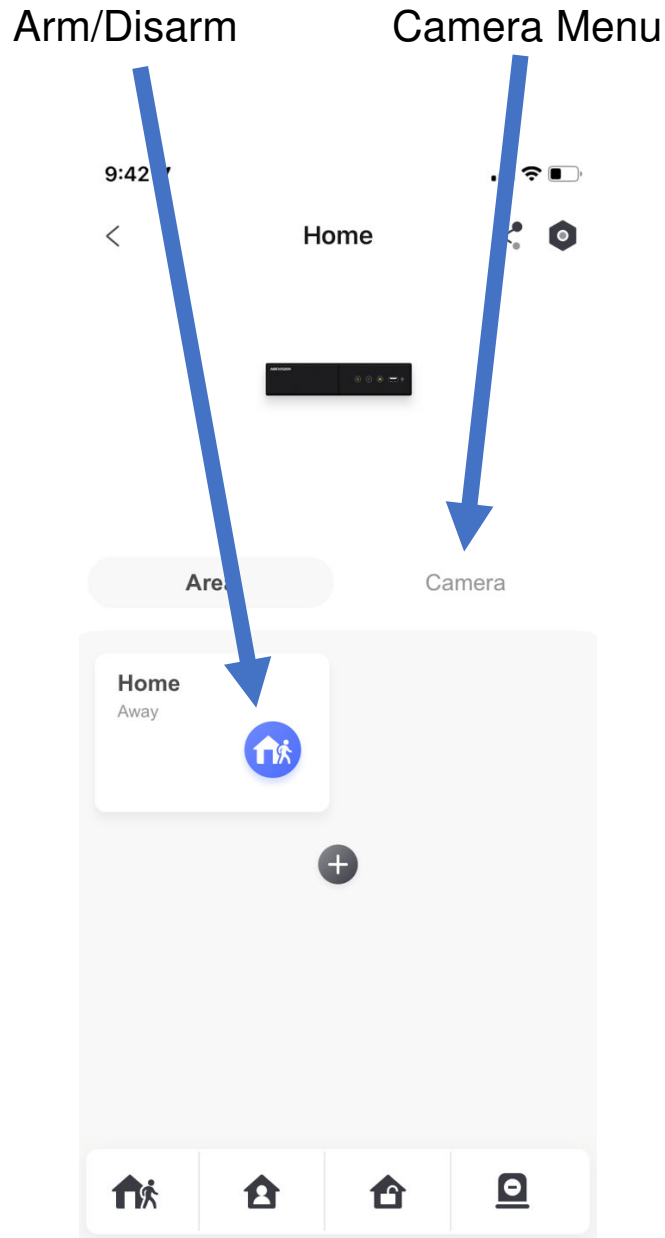
Always 'drag the screen down and release' to refresh the page and get the latest status/information from the system.



PART 1: GO TO THE LIVE-GUARD MENU



PART 2: ARM-DISARM



Arm/Disarm:

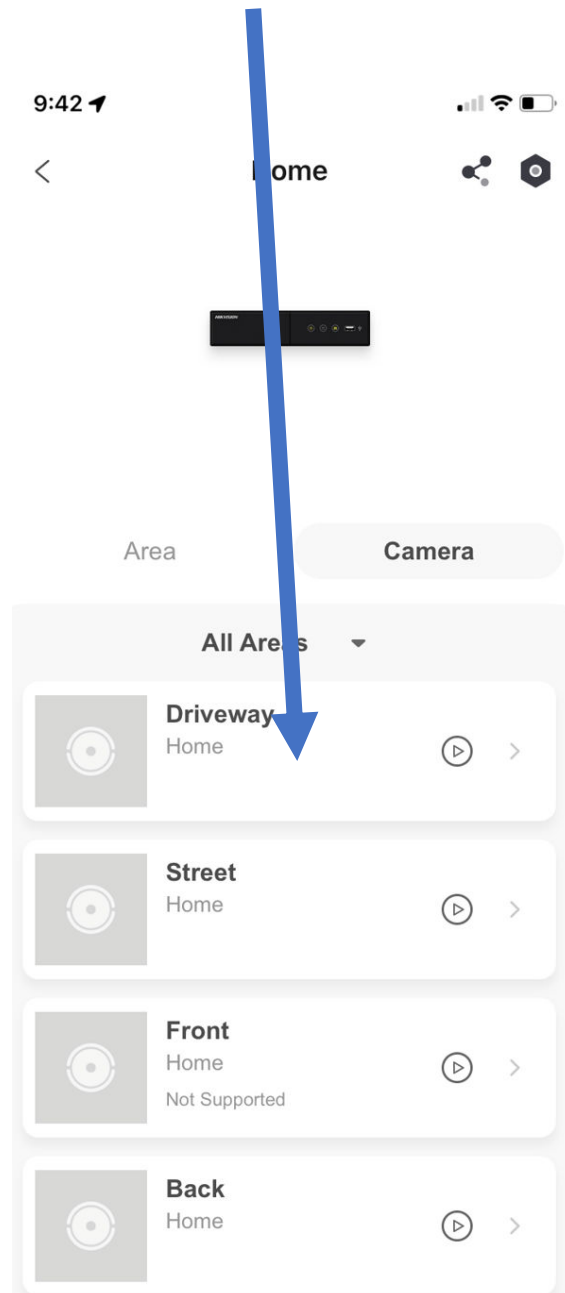
Turn on/off Live Guard features.

Armed	Disarmed
Icon = Highlighted Blue Status = Away	Icon = Not Highlighted Status = Disarmed

PART 3: CAMERA MENU

Change the setup and behaviour of the camera's sirens and strobe lights.

Choose the camera you want to configure.



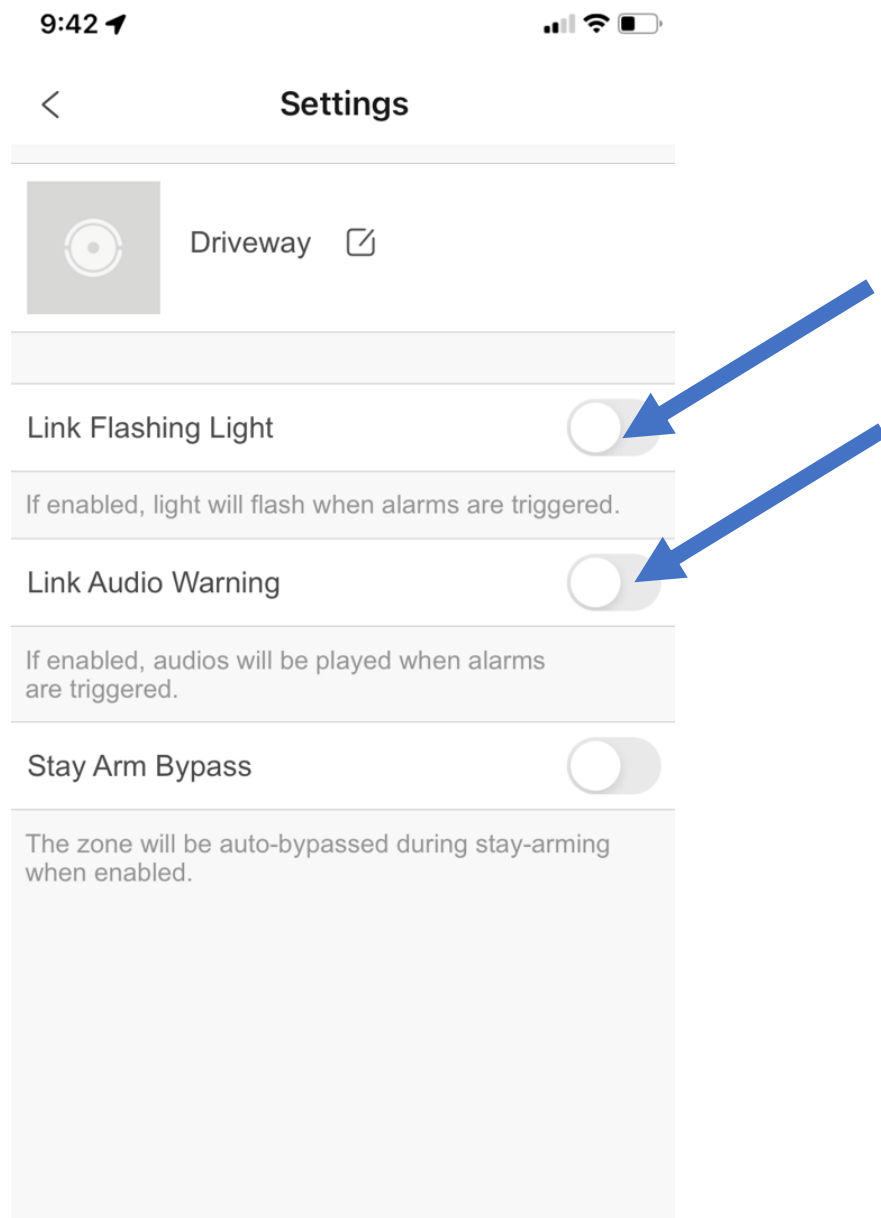
PART 4: CAMERA SETTINGS

You can choose for the Strobe Light to turn on when Live Guard is triggered.

You can choose for a Siren to turn on when Live Guard is triggered.

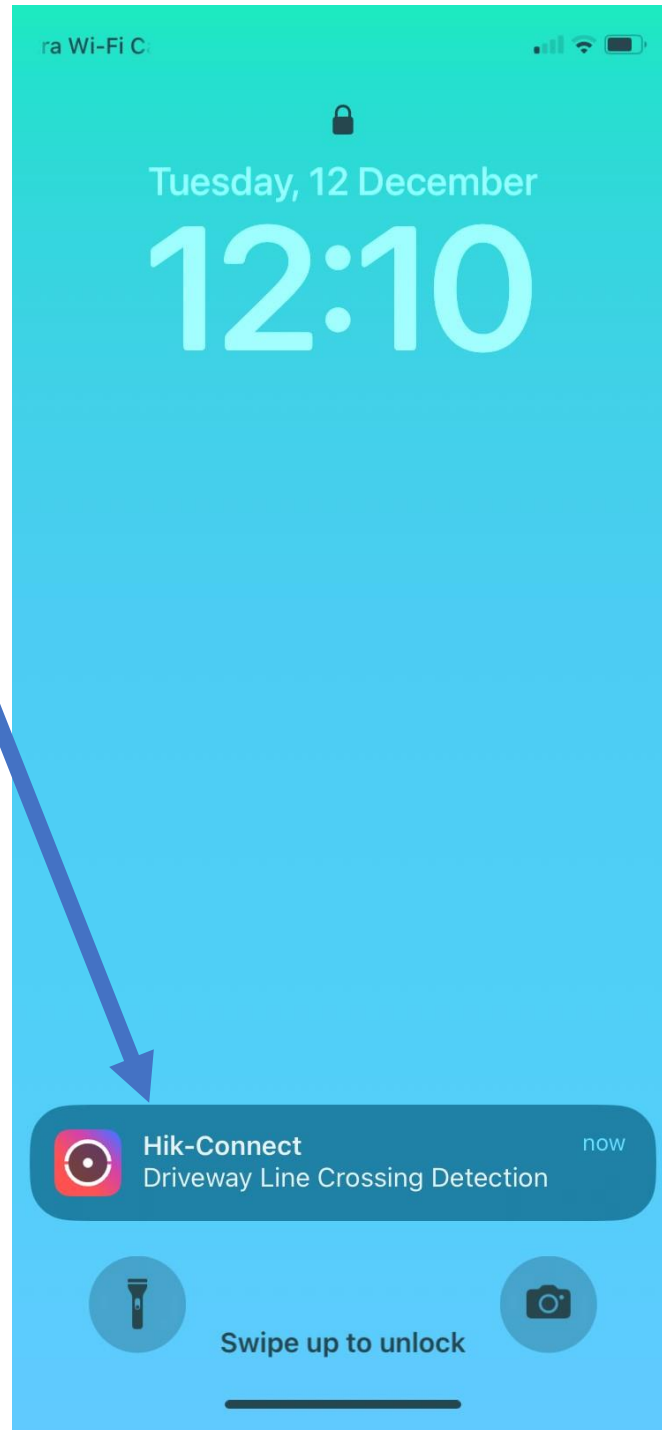
You can customise each camera independently.

Usually, the sirens and strobe lights are setup to come on for 5 seconds upon being triggered.



PART 5: NOTIFICATIONS

If Live-Guard is armed, and an event is triggered, you will receive a notification.



When you open the notification, you will see a preview of the event.

You can either 'Live-View' the camera now, or 'Playback' the event (ie: playback footage of the person/vehicle crossing the line).



PART 6: SIRENS AND STROBES

If Live-Guard is armed, you have turned on sirens and/or strobe lights for the chosen camera, and an event is triggered, the sirens and/or strobe lights will activate.

