

111. MASTER USER (JUNE 2025)

STEP 1

The master user is the 1st user who has the Hikvision device bound to their Hik-Connect account.

STEP 2

Once the master user has the device bound to their account, they can then share the device to other users.

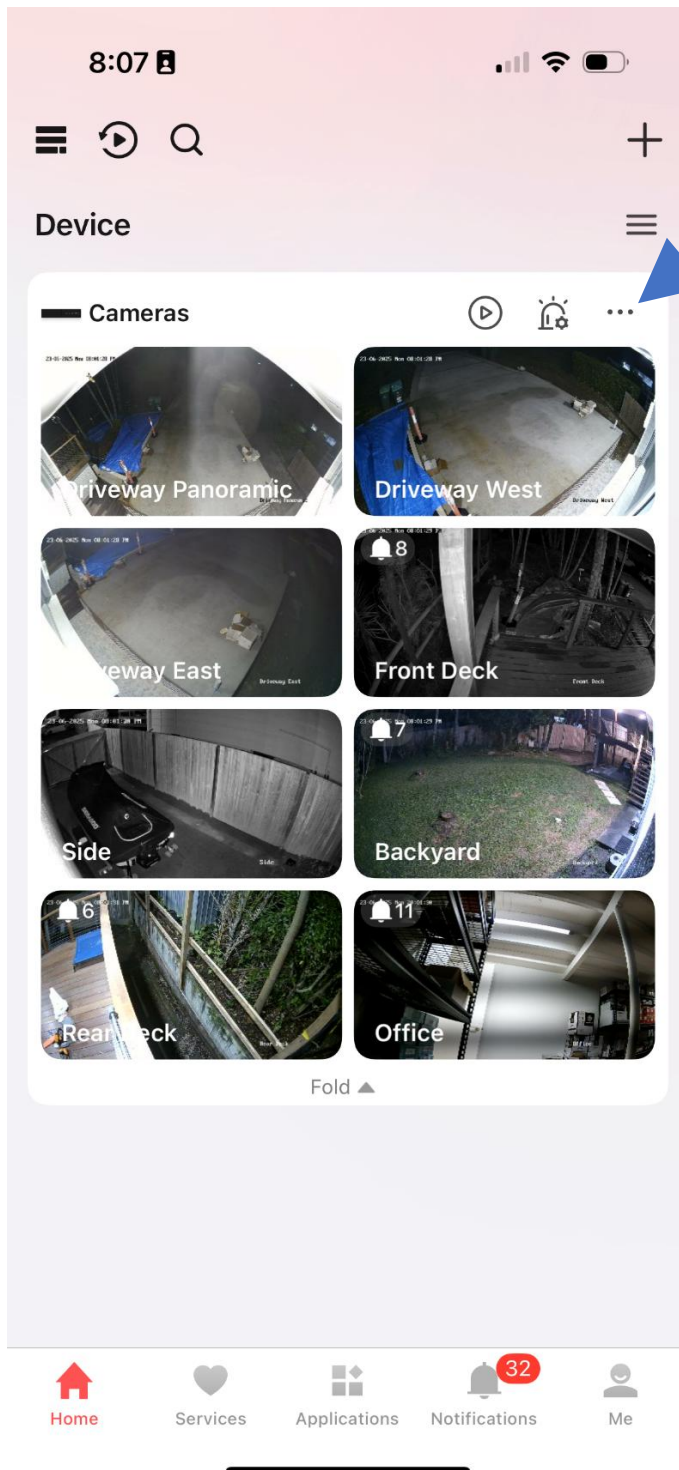
STEP 3

If you are the master user, you will have the 'Share' option in the device settings menu.



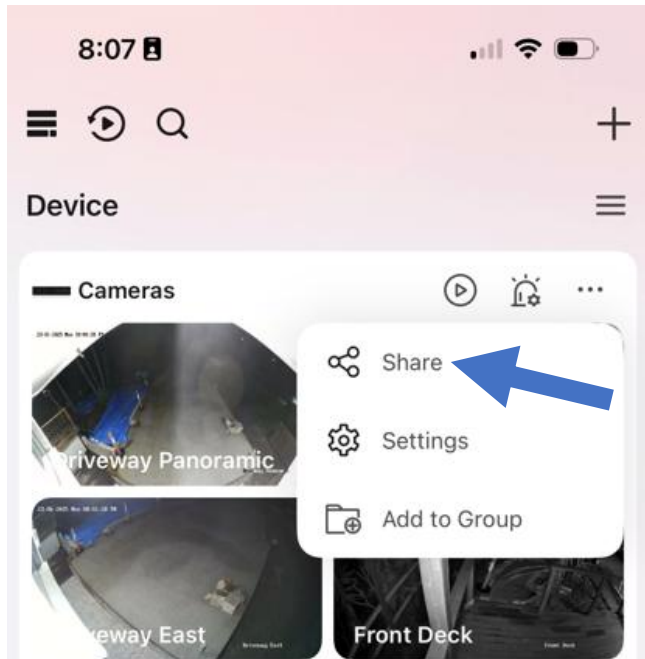
STEP 4

Click on the device settings menu (3 dots) on the 'Home' screen for the chosen device.



STEP 5

If you are the master user, you will have the 'Share' option.



STEP 6

If you are not the master user, you will not have the 'Share' option.

This means you are a 'Shared' user.

