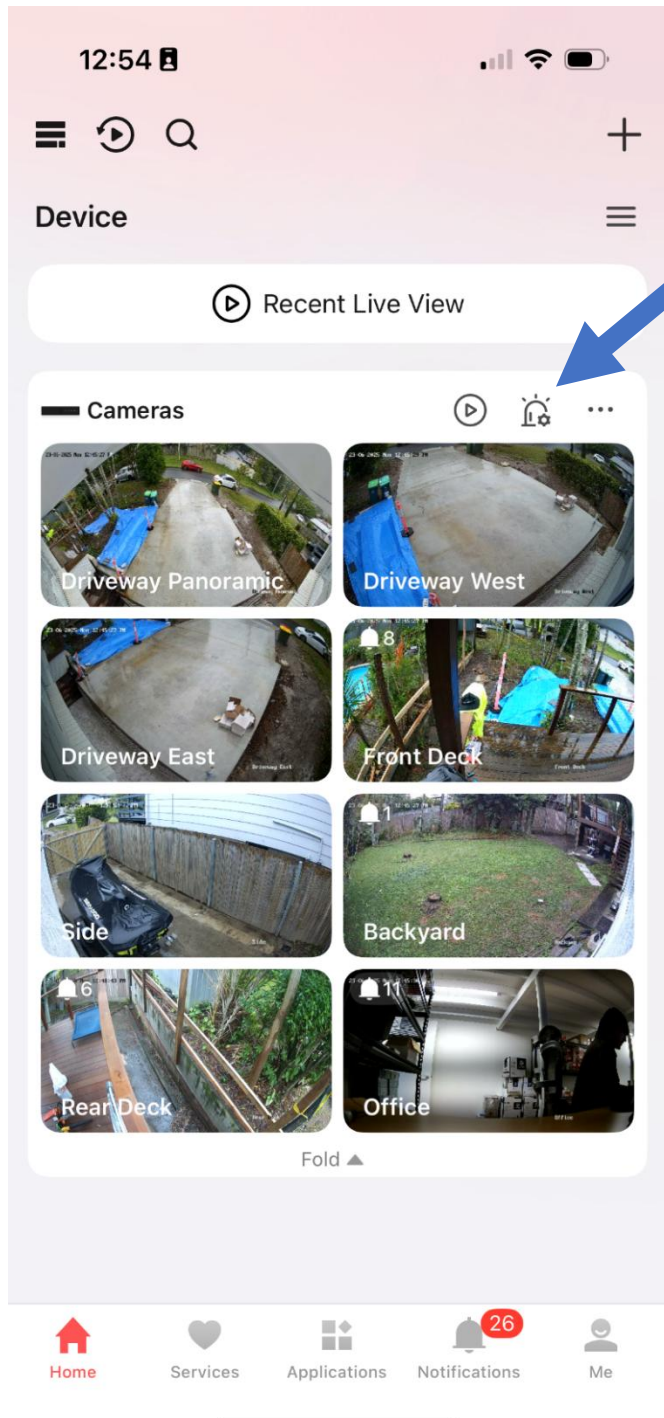


144. HOW TO CHANGE CAMERA BEHAVIOUR **(JUNE 2025)**

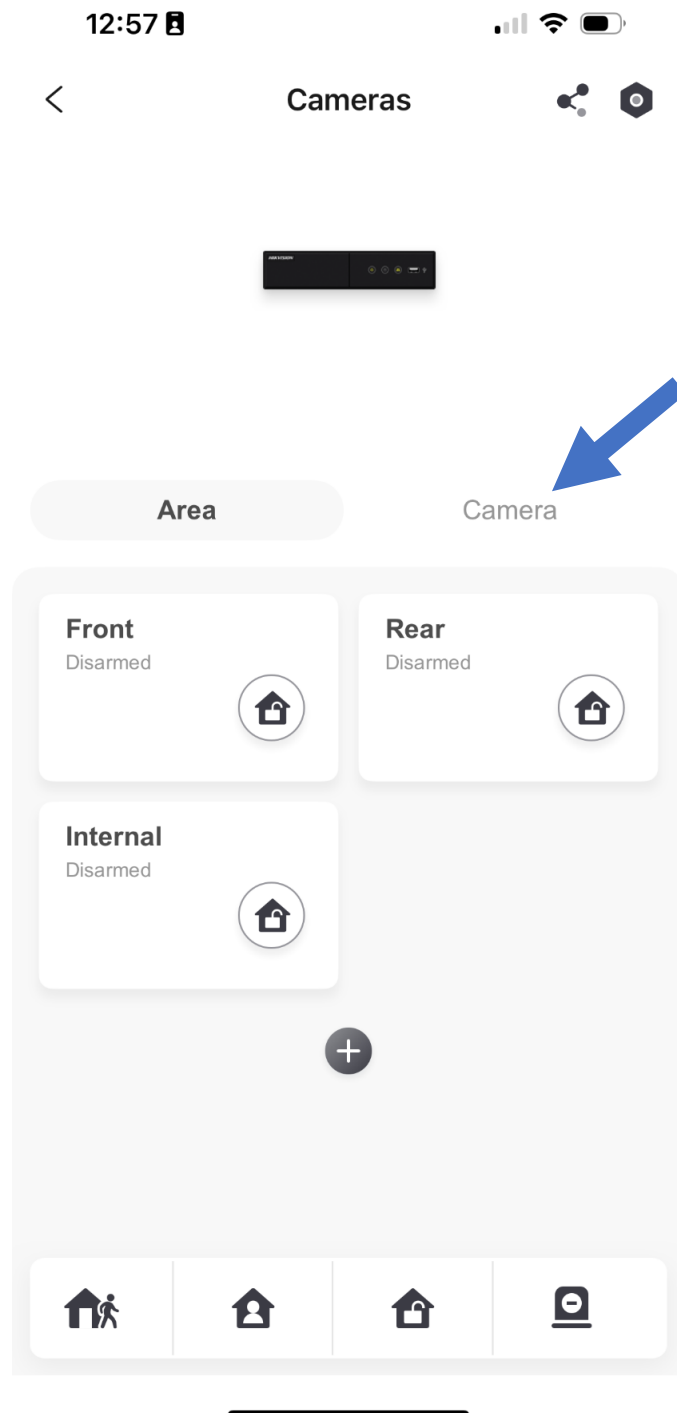
STEP 1

Press the 'Live-Guard' icon.



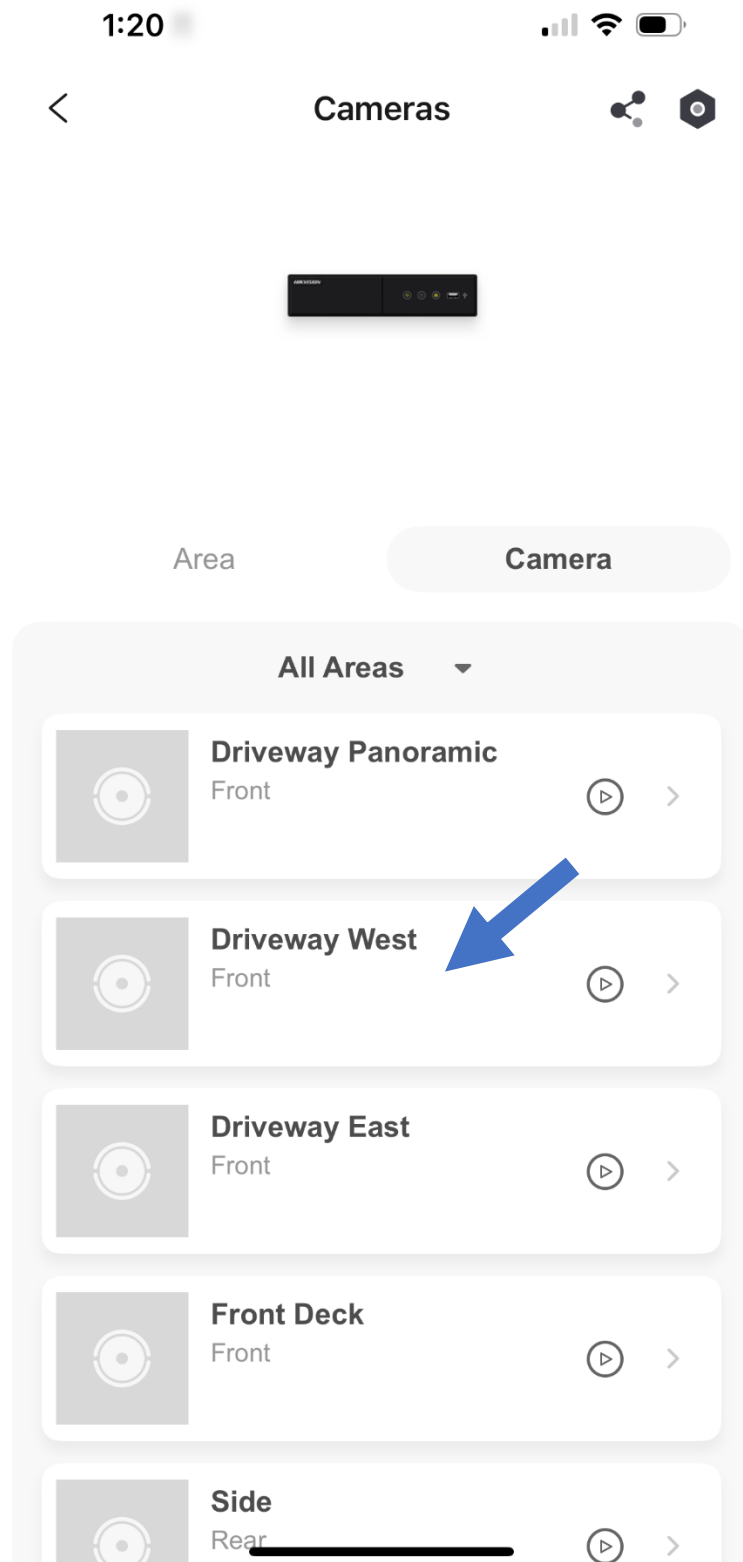
STEP 2

Go to the 'Camera' menu.



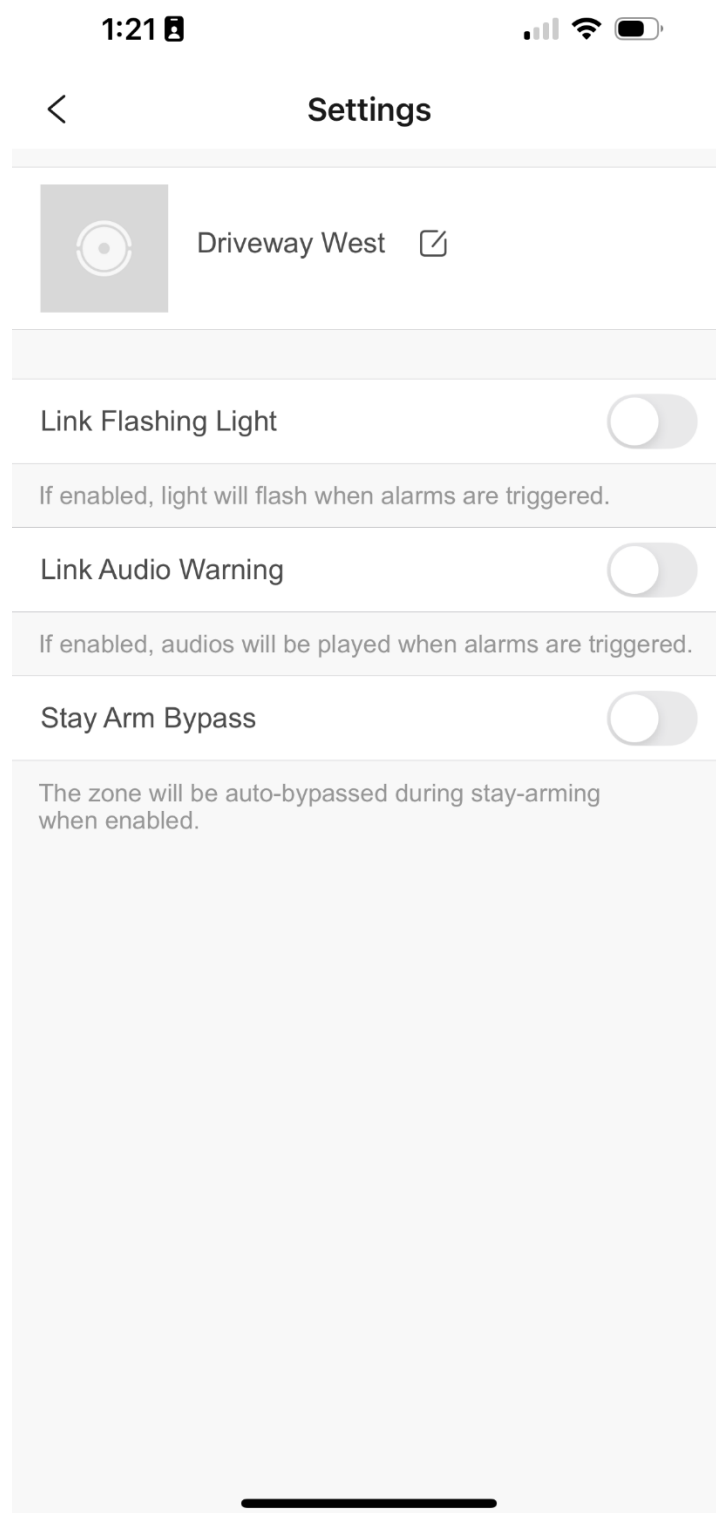
STEP 3

Choose the required camera to customize.



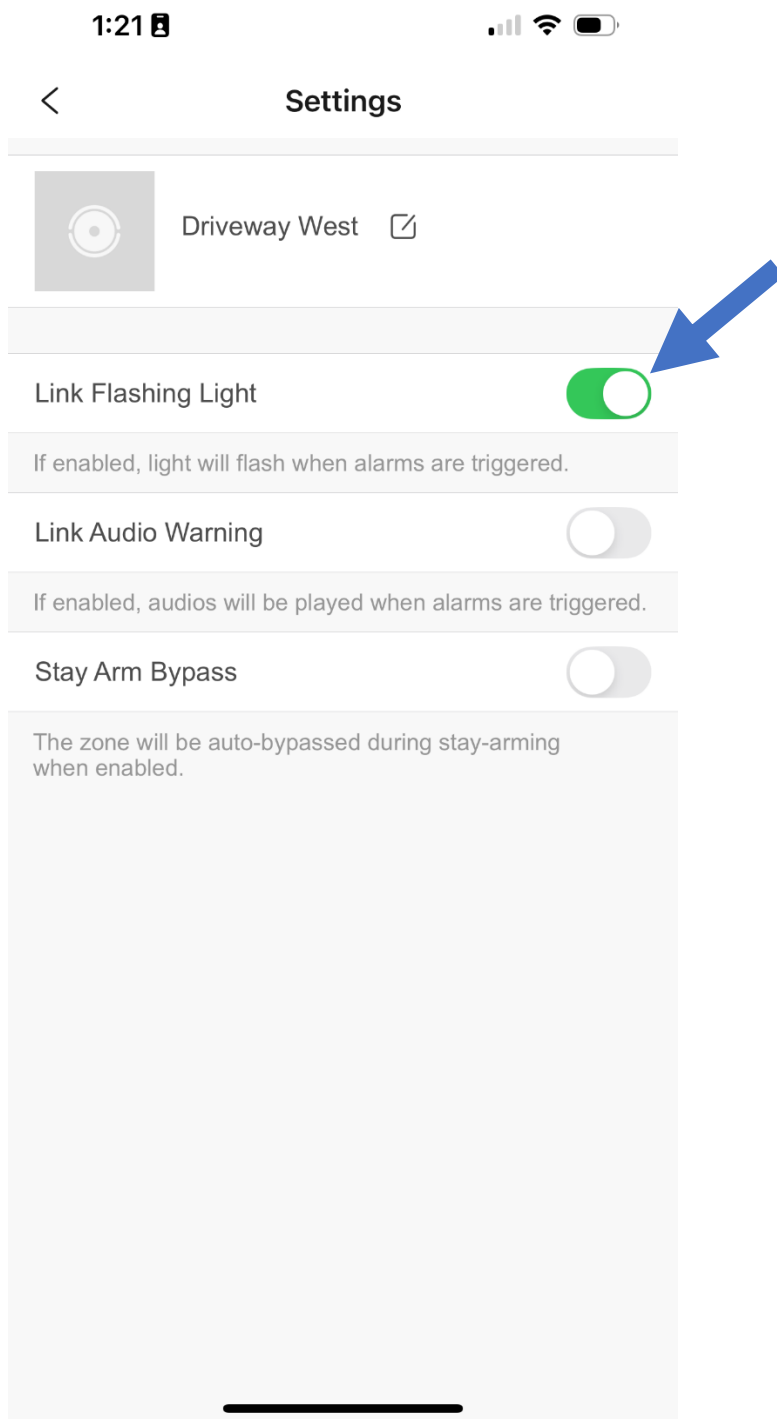
STEP 4

If the camera is configured as below, the camera will only send a **notification** when a perimeter protection event is triggered.



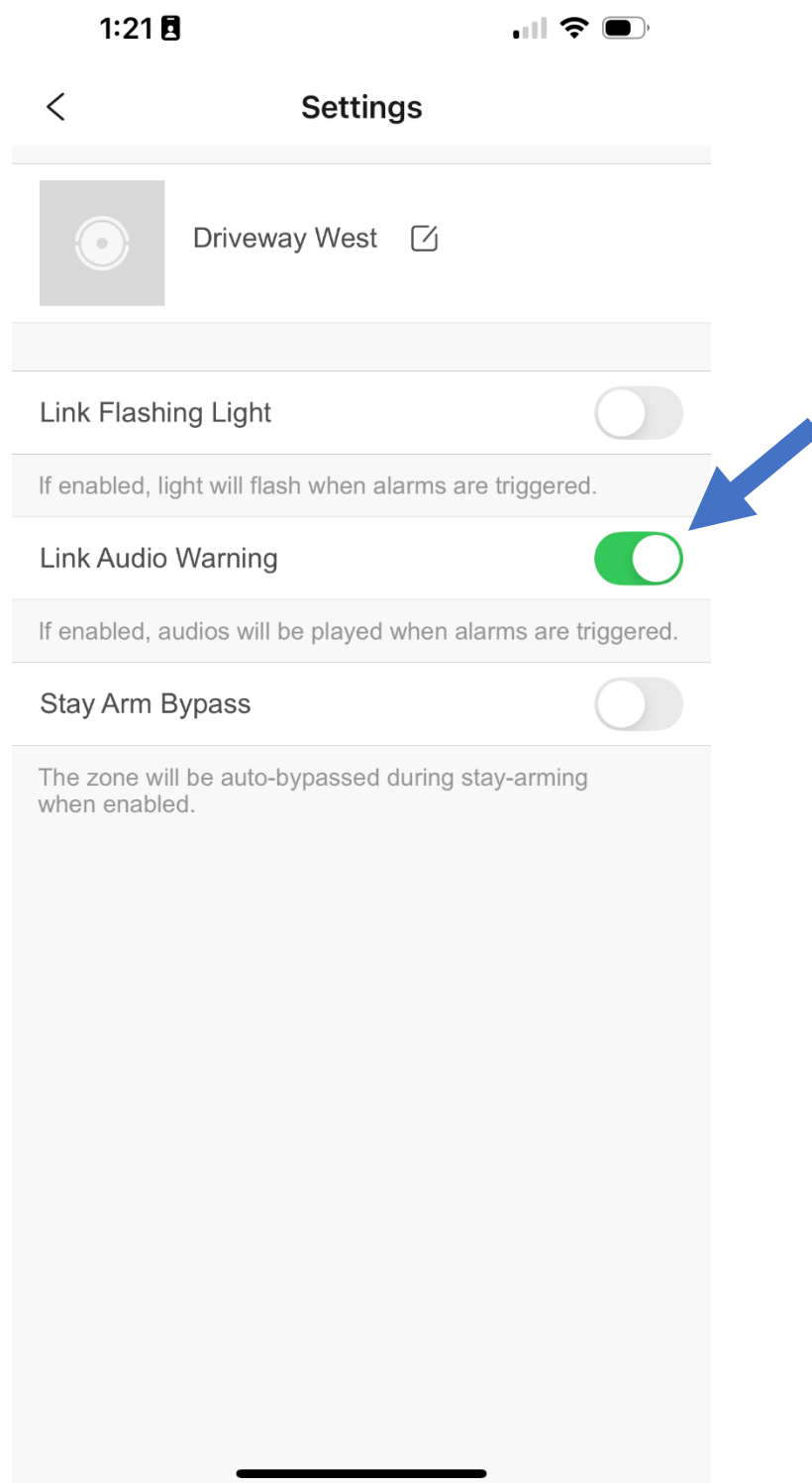
STEP 5

If the camera is configured as below, the camera will send a **notification**, and flash its built-in **strobe light** when a perimeter protection event is triggered.



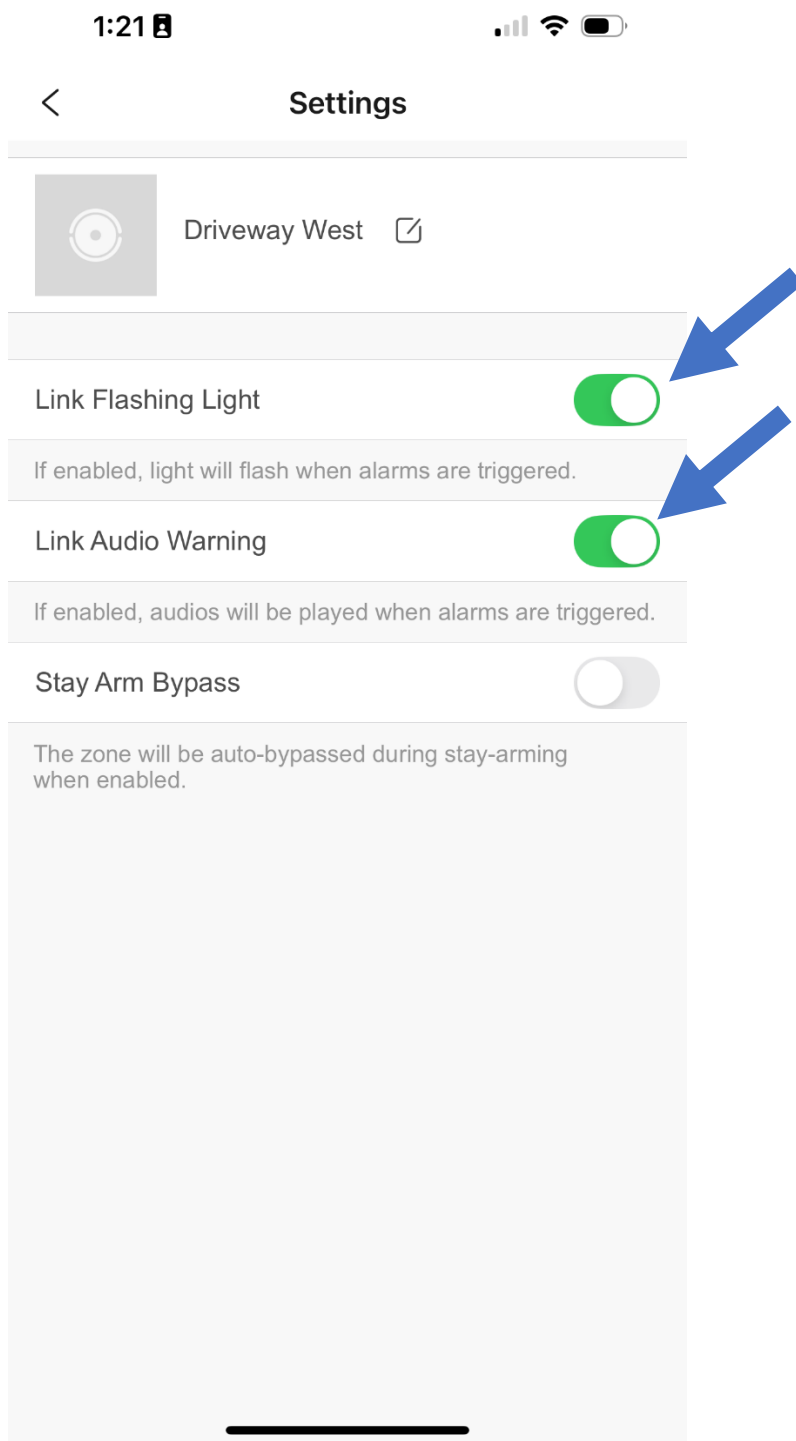
STEP 6

If the camera is configured as below, the camera will send a **notification** and activate its built-in **siren** when a perimeter protection event is triggered.



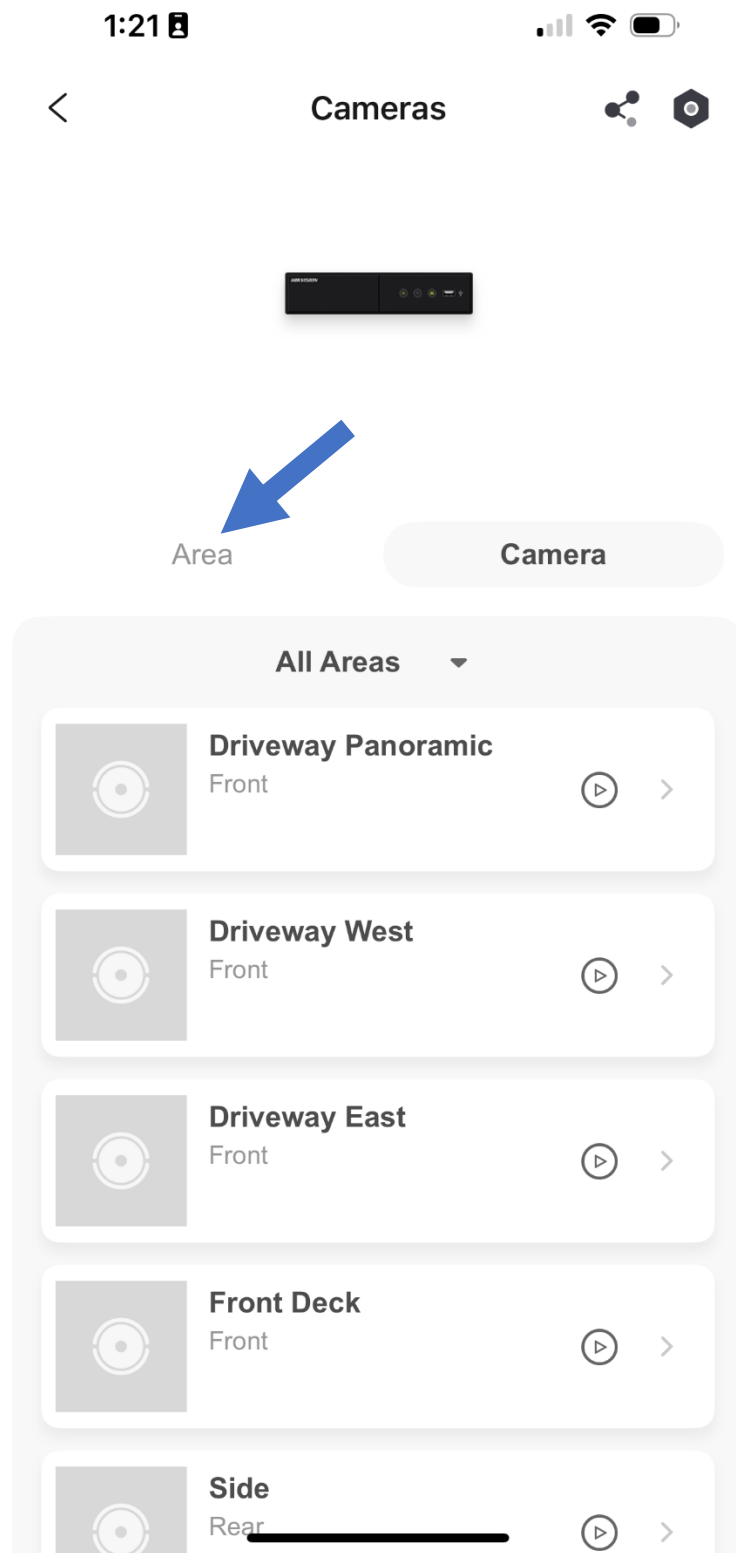
STEP 7

If the camera is configured as below, the camera will send a **notification**, flash its built-in **strobe light**, and activate its built-in **siren** when a perimeter protection event is triggered.



STEP 8

Go back to the 'Area' menu.



STEP 9

You can now arm or disarm area/s.

The configured changes will now be in effect.

