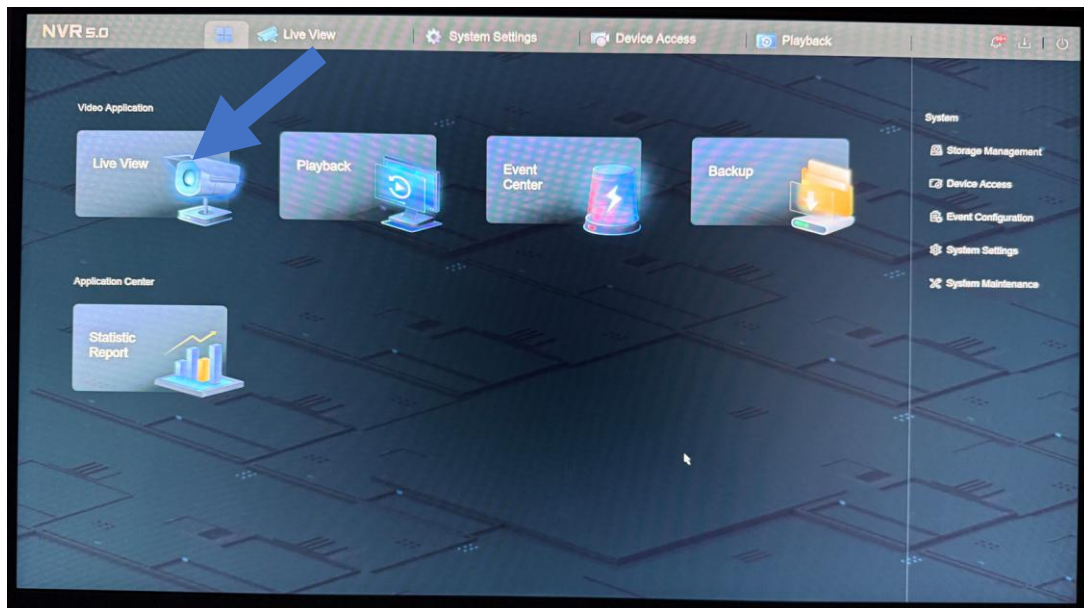


52. HOW TO LIVE VIEW CAMERAS (JUNE 2025)

STEP 1

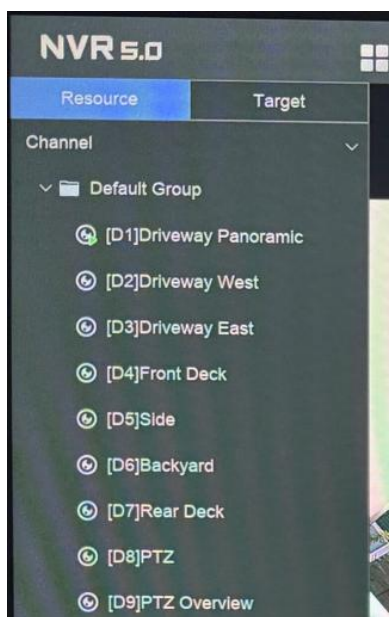
Click 'Live View'.



STEP 2

Determine how many cameras are connected to the system.

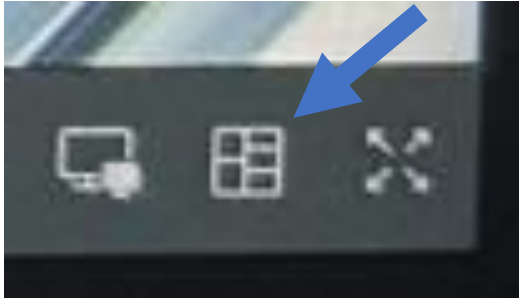
They will be shown in the menu on the left (Channel menu).



STEP 3

Press Window Division (aka: Split).

The button is in the bottom right hand corner.



STEP 4

Choose a suitable Window Division (ie: 4, 6, 8, 9 or 16).



STEP 5

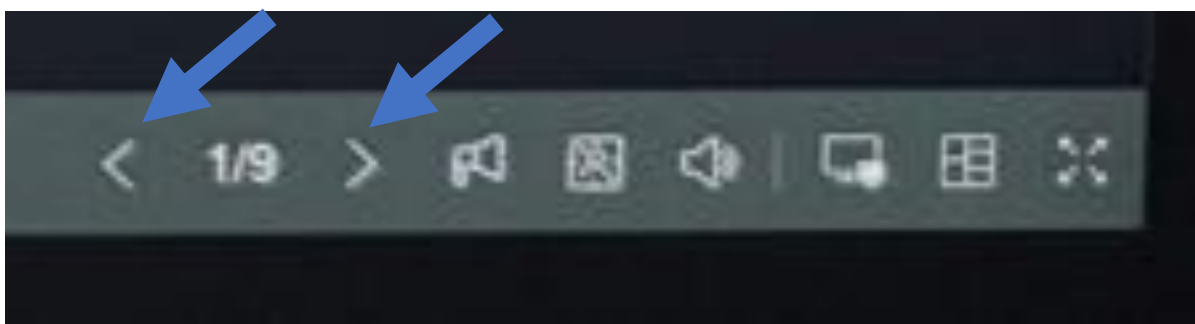
All cameras will be displayed on screen.



STEP 6

If you have more cameras than are displayed on the screen, they will be separated across multiple screens.

You can scroll through the screens by using the Next Screen or Previous Screen buttons at the bottom.



STEP 7

To bring up a camera in single screen, Press Window Division (aka: Split).



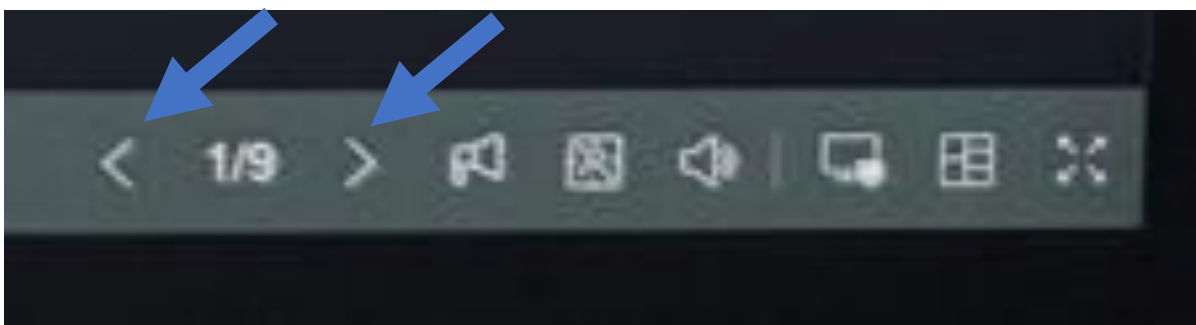
STEP 8

Choose 1.



STEP 9

Use the Next Screen and Previous Screen at the bottom to cycle through the cameras.



STEP 10

Once completed, use the Window Division (aka: Split) to go back to the full quantity of cameras (ie: 4, 6, 8, 9 or 16).



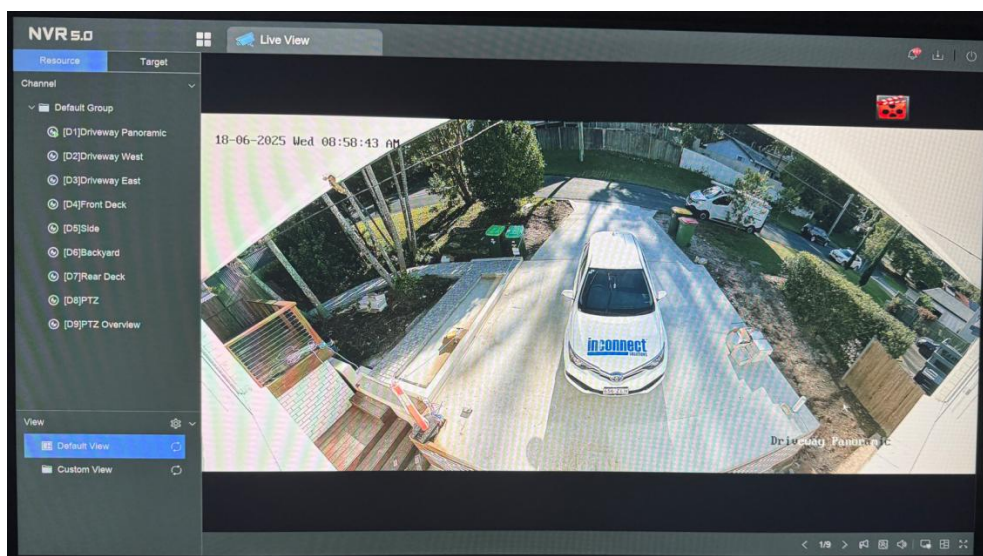
STEP 11

To zoom in on a camera, you will need to go back to single screen.

Press Window Division (aka: Split) .

Choose 1.

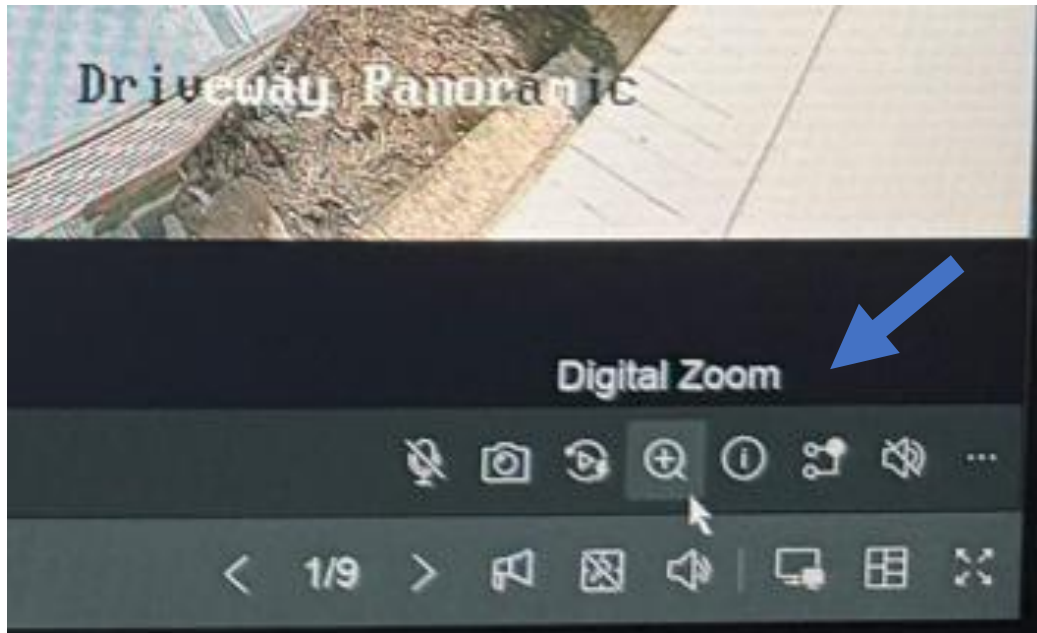
Use the Next Screen and Previous Screen at the bottom to cycle through the cameras to the required camera.



STEP 12

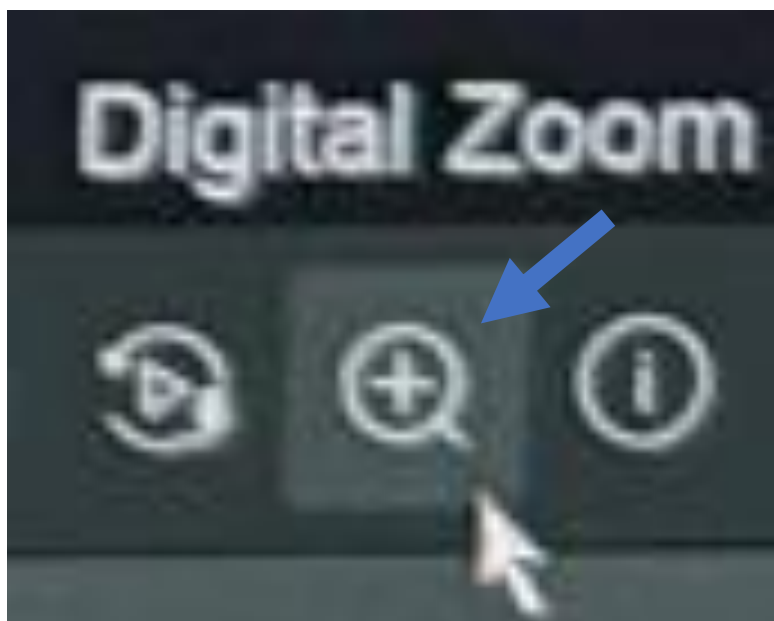
Hover the mouse cursor over the cameras view.

Locate the icons in the lower right hand corner.



STEP 13

Click on the digital zoom icon.



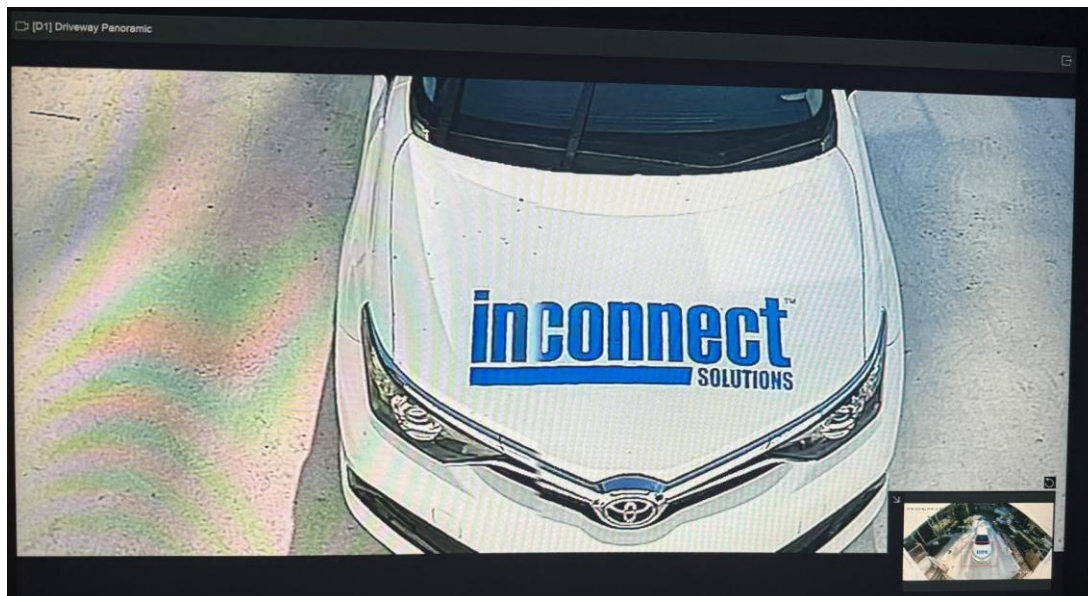
STEP 14

Hold your cursor over the target you want to zoom in on.

Scroll the mouse wheel up to zoom in.

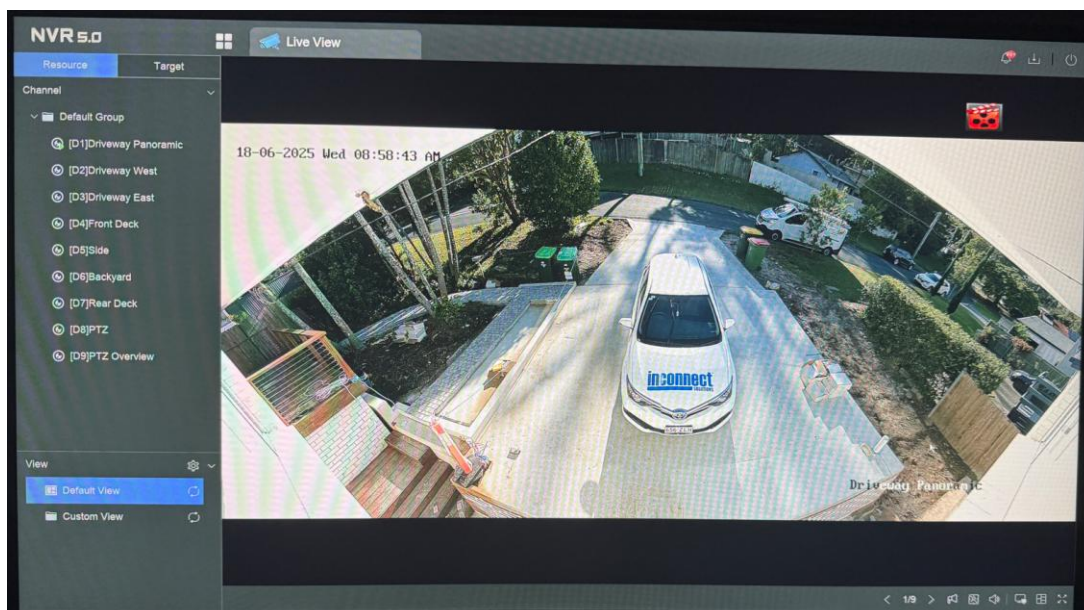
Scroll the mouse wheel down to zoom out.

When zoomed in, you can also click and drag to move around.



STEP 15

Once completed, simply right click with the mouse to exit digital zoom.



STEP 16

Once completed, use the Window Division (aka: Split) to go back to the full quantity of cameras (ie: 4, 6, 8, 9 or 16).

